

**14th Street Streetscape Project N.W. From
Thomas Circle to Florida Ave
DC Contract No.: DCKA-2016-C-0043**

FAP No.: STP-2016 (054)

**CONSTRUCTION MANAGER'S
WEEKLY PROGRESSREPORT
8/12/2019 - 8/17/2019**

Project Website: www.14thstreetproject.com



PREPARED BY Mark R. Regis

1. EXECUTIVE SUMMARY

Project Description:

The scope of the construction work includes the followings:

- The removal and disposal of existing roadway pavement, curb and gutter and sidewalks, milling of existing asphalt pavement to the extents shown on plans.
- The resurfacing of existing asphalt pavement using 2" Superpave AC surface on 14th Street between Thomas Circle and Florida Ave as shown in the plans.
- The replacement of all curbs and gutters with Granite Curbs, 12" Brick Gutter, Concrete Sidewalk, Wheelchair/Bicycle Ramps, and Cobble Stone LID Paver, Bioretention Planters as shown on the plans or as directed.
- The removal and transportation to storage yard of Existing Traffic Signals and Light Poles as shown on plans. Traffic signal relocation and equipment upgrading of Traffic Signals at all intersections of 14th Street within the project limit as shown on plans.
- Streetscaping throughout the 14th Street corridor as shown in the plans.
- The installation of traffic signing and permanent pavement markings.
- Upgrading of street lighting throughout the 14th Street corridor as shown in the plans.
- Construction and upgrading of single catch basin, double catch basin, and triple catch basin.
- Construction / Upgrading of new Watermains, Fire Hydrants
- Full Reconstruction of R Street.
- Installation of new Bus Islands and bus pads as shown on the plans and as directed.
- The installation and use of erosion and sediment control measures as required.
- Mobilization and demobilization, performance of field layout, provision and maintenance of engineer's field facilities, progress photographs, and the proper maintenance of vehicular and pedestrian traffic during construction, including provision of all required construction warning and detour signs and traffic control devices.

2. STATUS OF CONSTRUCTION / PROGRESS SUMMARY

Progress Summary:

1. FMCC continued work at bus island & bus lane at 14th & R. Poured ~9 CYs of concrete.
2. DEN completed sidewalk curb at NEC of 14th & U St.
3. FMCC completed milling & paving from P St. to Corcoran Street during night shift (8pm to 5am) operations.
4. FMCC complete brick & gutter work at the 14th & R Street and ADA ramp at 14th St. & Wallach.
5. FMCC demolished and re-poured class-F concrete for sidewalk at 14th St. & P St.
6. Omni continues water main installation work at 14th St. NW & R St.
7. FMCC formed & poured TS foundation at 14th & W St. & 14th & R St.
8. DDOT Reps on-site to provide oversight of milling & paving operations
9. FMCC paved bike lane near bus island going SB at 14th St. & Rhode Island Ave.
10. DEN sawcut & completed punch list repair work at three corners of 14th & Q St.
11. FMCC paved at the intersection of 14th & Q St. and paved going SB from Church St. to P St.

CM Community Outreach Activities:

1. TBA addressed community complaints & blogs regarding night shift milling & paving operations
2. TBA personnel continues to respond to questions that come through project portal.

3. QC/ ISSUES / ACTION ITEMS

- PEPCO utility conflicts identified at ~ approximately 7 locations:
 - 14th & Riggs – has already started since ~ 08/05/2019. Project duration is ~1month.
 - 14th & U – There are three (3) manholes that need vertical adjustment vs. one (1) previously identified
 - 14th & P – Manhole abandonment project is already underway
 - Utility Conflict at 14th & Swann St.
 - FMCC is working to relocate an electric man-hole vault at 1720-1722 14th St. as a PEPCO subcontractor.
 - 14th & Q going (SB) conflicts with bus island work

Action	Description	Action By	Original Date	Expected Date	Status
001	Address the MOT, safety issues within the corridor.	FMCC/Kevin Felix	June 5, 2019	August 20, 2019	Ongoing
002	Forward Clear Channel acceptance documentation for the bus shelters	FMCC/John Constantino	June 14, 2019	August 20, 2019	Ongoing
003	12" Watermain conflict. Confirm responsibility party for the relocation	DDOT/Ramesh Mirchandani	June 25, 2019	August 20, 2019	Ongoing
004	Address the issues with cracked/missing sidewalk sections	FMCC	July 2, 2019	August 20, 2019	Ongoing
005	Address DC Water's issue that DEN is covering their curb stops, between R and T Streets.	FMCC/DEN	July 2, 2019	August 20, 2019	Ongoing
006	Insert the missing valve cover at 1724 14 th Street NW	FMCC	July 5, 2019	August 20, 2019	Ongoing
007	FMCC to provide some type of handle for the grate placed IFO Cleaners at 1329 14 th Street	FMCC/John Constantino	July 30, 2019	August 20, 2019	Ongoing
008	DDOT to provide FMCC Article 3 letter for the ITS Components.	DDOT/ Samuel Ayodele	July 30, 2019	August 20, 2019	Ongoing

009	FMCC to resolve the cracked granite, contact insurance, and follow up with the businesses.	FMCC/Abdalla Elsheikh	July 30, 2019	August 20, 2019	Ongoing
010	Mr. Said Chestnut to contact Mr. Jermaine Quattlebaum and start punch list for DC Water work.	ATCS/Said Chestnut and DC Water/ Jermaine Quattlebaum	August 06, 2019	August 16, 2019	Ongoing
011	Submit RFI for the need of the curb cut in bus island after shifting the ADA ramp at the SEC of T Street.	FMCC/Abdalla Elsheikh	August 13, 2019	August 16, 2019	Ongoing
012	Address the comments regarding the pricing for the 4 extra poles used for temporary lighting	FMCC/Shaddy Abdelaal	August 13, 2019	August 20, 2019	New
013	RFI-16, CB-25 conflict on T Street. Provide a sketch with the proposed solution	FMCC/ Cesar Casanova	August 13, 2019	August 20, 2019	New
014	RFI-16, CB-25 conflict on T Street. Provide a write-up on the proposed solution	DC Water/ Jermaine Quattlebaum	August 13, 2019	August 20, 2019	New

4. MEETINGS/ PROJECT COORDINATION

- Progress Meeting are schedule at the Field Office every Tuesday at 10:30am
- DDOT PM was on-site to visit project and attend weekly progress meeting

5. DAILY WORK PERFORMED

Monday 8/12/2019

FMCC completed common excavation for a bus island at 14th & R, curb-parking lane plus and sidewalk. Proper MOT was established at 14th & Thomas Cir, 14th & R St. and 14th & Wallach and 14th & U St. in NB and SB directions.

DEN worked at NEC of 14th & Wallach PI, 14th & U St; at 1925 Block, 1947 Block at NEC of U & 14th St. DEN Construction placed 51.9 of straight granite plus 25.2 LF of curved (radial) granite, 29.1 SY of brick & gutter. The crew placed & compacted 10" common embankment, topped with 4" of GAB before placement of 4" Class-F concrete for sidewalk and bicycle/wheelchair ramp.

Tuesday 8/13/2019

FMCC complete brick & gutter work near bus island at 14th & R St. FMCC also completed ADA ramp at 14th & Wallach St.

DEN worked at NEC of 14th & Wallach Pl, 14th & U St; at 1900 block of 14th St. and NEC of 14th & U St. NW. DEN crew placed 42.5 LF straight granite curb on 14th St between Wallach Place & U St. DEN also adjusted 2 utility (Sewer-Water) Manholes at NEC of 14th St. & U St. The crew placed 10" common embankment, topped with 3.58CY of graded aggregate base (GAB) prior to placement of 4" Class-F (3500 psi) concrete base for sidewalk.

Wednesday 8/14/2019

FMCC Asphalt Division placed a total =269.74 tons of 12.5mm surface course asphalt. FMCC also placed asphalt at the intersection of Q St.& 14th St.

DEN did common excavation and placed concrete at the NWC of P & 14th St. DEN also worked at SEC of 14th & Wallach Place installing sub-grade for PCC sidewalk, granite curb and wheelchair ramps. Corner was replaced with straight granite curb, new PCC sidewalk and (2) PCC bicycle/wheelchair ramps. Punch list work also continued at 1412 and 1418 14th St.

Omni Excavators continued work at 14th & R St water main location removing 8" mechanical tee and previously installed 8" D.I.P. at K3 Sta. 1+37.

Thursday, 8/15/2019

FMCC Asphalt Division placed tack near 1200 N St. on the EB intersection of 14th St. & N St, at the intersection of Rhode Island Ave. & 14th St. NW and intersection of Church St. & 14th St. NW. FMCC Asphalt Division placed a total of 67.50 tons of 12.5mm surface course asphalt at bike lane near bus island at 14th & Rhode Island Ave. and intersection of Q St. & 14th.

DEN continues punch list work east side of 1500 block of 14th St. DEN sawcut and repaired sidewalk finish work on 3 corners of 14th St. NW & Q St. & installed 43.5 LF of handrail at NB bus island on N St.

Omni Excavators continued water main work at 14th & R St removing 8" mechanical tee and 24.5 LF previously installed 8" ductile iron pipe (DIP) at K3 Sta. 1+37.

Friday, 8/16/2019

FMCC Asphalt Division did adjust two utility MH Covers (1 Sewer & 1 water manhole cover) at the intersection & 14th St. & N Street; the other near 1520 14th St. NW at the intersection of Church St. & 14th St. FMCC paved the SB parking lane of between P St. and Church St and placed a total of 59.27 tons of surface course asphalt. FMCC did also establish MOT with proper signs and devices at five locations maintaining minimum of two travel lanes (NB& SB) within the work zone as per approved specification and traffic control plan.

DEN continued punch correction work at the corner of 14th St. & Q St. DEN excavated, reinforced and installed form work in preparation for construction of slot drain from 1819-1825 14th Street NW.

Saturday, 8/17/2019

FMCC placed flaggers at SEC of 14th & R St during excavation of water main trench by Omni Excavators.

Omni Excavators continued water main work at 14th & R St. 20 LF of 8" ductile iron pipe was placed and backfilled at K3 Sta. 0+78 going westbound on R Street.

6. INSPECTION& MATERIAL TESTS PERFORMED

1. During paving operations, asphalt compaction and quality control tests were conducted by 2 Geo Techs from Dulles Engineering. QC tests were also conducted by DDOT Construction Inspectors and yielded the following results:
 - Surface course asphalt temperature samples were taken in two locations and measured to be from 262°F to 290°F
 - Nine (9) asphalt compaction density tests were conducted, and the compaction yielded satisfactory results meeting the minimum requirement of 96% compaction.
 - 4 asphalt core samples at 4 different locations were taken from P to Corcoran St. & delivered to laboratory
 - One (1) sample of asphalt was taken per every 500 tons of asphalt delivered.

7. RFI's/SUBMITTALS

1. Requests for Information:

- To date, we have received **35** RFIs; **34** RFIs have been answered.

2. Submittals:

- We have received **82** Submittals; **78** Submittals have been Approved.

8. CHANGE ORDERS/TASK ORDERS

- Article 3 Letter provided for Bus Shelter Removal.
- PCO submitted to DDOT for missing ITS fiber items.
- PCO submitted to DDOT for extra fittings for water main work.
- FMCC to revise overhead cost (field office, MOT...) change order for 6 month contract extension.

9. DBE or CBE PARTICIPATION SUMMARIES

3. ATCS CBE / DBE Activity:

- Hayat Brown LLC.: Provided Office Engineering and Inspection support for this project.
- Cube root: Provided Inspection support

4. Fort Myer Construction Corp. DBE Activity:

- Omni Excavators Inc.
- Den United LLC.

ACCIDENTS/ INCIDENT

- No major incidents to report

11. PHOTOS OF WORK PERFORMED THIS PERIOD



FMCC pouring concrete at bike lane near bus island near 14th & R



DEN vertically adjusted and raised two manholes near Wallach Place and 14th St. NW



Night shift paving operations along 14th Street from P to Corcoran St.



Brick gutter work for bus island at 14th St. NW & R St. going NB



ADA ramp construction at 14th St. & Wallach (NB)



Proper MOT established along 14th St. during night shift paving operations



Completed sidewalk finish work at NEC of 14th St. NW & U St.



Paving operation along parking lane at 14th St (NB) going towards P St.



NB & SB lanes open with temporary markings installed as FMCC paved NB on 14th St.



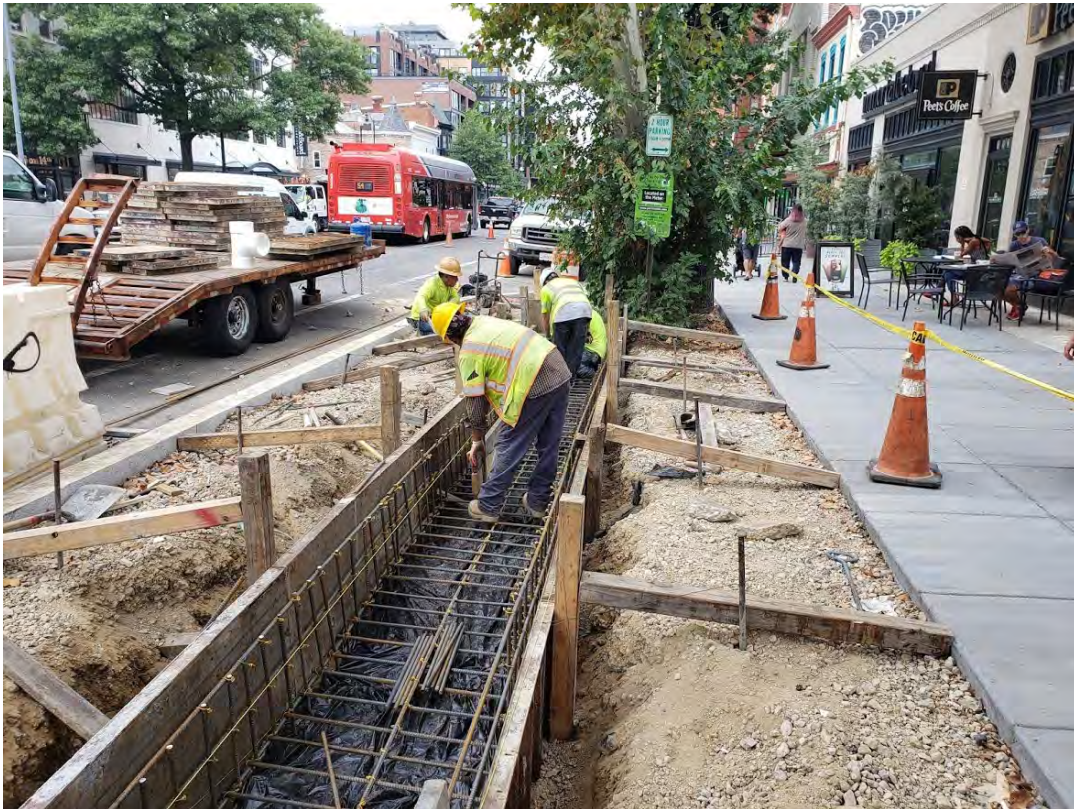
Cooling of asphalt on NB lane before opening up for traffic at 14th St. NW & Q St.



DEN excavating for sidewalk installation at 14th St. & P Street



DEN completing sidewalk finish work at 14th St. & P Street



DEN installing re-bar for slot drain installation along 1821 14th St. NW



DEN completing punch list repair work at 14th & P and 14th St. & Q St. NW



Paving parking lane going SB on 1500 block of 14th St. NW



Placing & grading asphalt around MH covers before compacting SB lane of 1500 block of 14th St