

14th Street Streetscape Project N.W. From
Thomas Circle to Florida Ave
DC Contract No.: DCKA-2016-C-0043

FAP No.: STP-2016 (054)

**CONSTRUCTION MANAGER'S
WEEKLY PROGRESS REPORT**
9/01/2019 - 9/07/2019

Project Website: www.14thstreetproject.com



Long Fence installing handrail at the N street Bus Island

PREPARED BY Kendry A. Contreras

1. EXECUTIVE SUMMARY

Project Description:

The scope of the construction work includes the followings:

- The removal and disposal of existing roadway pavement, curb and gutter and sidewalks, milling of existing asphalt pavement to the extents shown on plans.
- The resurfacing of existing asphalt pavement using 2" Superpave AC surface on 14th Street between Thomas Circle and Florida Ave as shown in the plans.
- The replacement of all curbs and gutters with Granite Curbs, 12" Brick Gutter, Concrete Sidewalk, Wheelchair/Bicycle Ramps, and Cobble Stone LID Paver, Bioretention Planters as shown on the plans or as directed.
- The removal and transportation to storage yard of Existing Traffic Signals and Light Poles as shown on plans. Traffic signal relocation and equipment upgrading of Traffic Signals at all intersections of 14th Street within the project limit as shown on plans.
- Streetscaping throughout the 14th Street corridor as shown in the plans.
- The installation of traffic signing and permanent pavement markings.
- Upgrading of street lighting throughout the 14th Street corridor as shown in the plans.
- Construction and upgrading of single catch basin, double catch basin, and triple catch basin.
- Construction / Upgrading of new Watermains, Fire Hydrants
- Full Reconstruction of R Street.
- Installation of new Bus Islands and bus pads as shown on the plans and as directed.
- The installation and use of erosion and sediment control measures as required.
- Mobilization and demobilization, performance of field layout, provision and maintenance of engineer's field facilities, progress photographs, and the proper maintenance of vehicular and pedestrian traffic during construction, including provision of all required construction warning and detour signs and traffic control devices.

2. STATUS OF CONSTRUCTION / PROGRESS SUMMARY

Progress Summary:

1. Short week Labor day weekend
2. FMCC demobilize its subcontractors (Omni, Den) for couple days
3. FMCC sign crews on site installing small signs
4. FMCC Electrical installing lightpoles
5. DEN continue with Sidewalk work at W street
6. Omni continues water main installation work at 14th St. NW & R St. Final tie in done, ready to begin pressure testing
7. PEPCO contractors continue work at Riggs, PEPCO finished work at R street and P street

CM Community Outreach Activities:

1. TBA addressed community complaints & blogs regarding Sidewalk work and access to business
2. TBA personnel continues to respond to questions that come through project portal.

3. Continue working with Businesses along W street block.

3. QC/ ISSUES / ACTION ITEMS

- PEPCO utility conflicts identified at ~ approximately 7 locations:
 - 14th & Riggs – has already started since ~ 08/05/2019. Project duration is ~1month. Schedule completion 10/15
 - 14th & U – There are three (3) manholes that need vertical adjustment vs. one (1) previously identified. Waiting for vertical adjustment price from FMCC
 - FMCC is working to relocate an electric man-hole vault at 1720-1722 14th St. as a PEPCO subcontractor. Ongoing
- Developer Ellisdale at Florida and 14th Street must vacate the staging area and sidewalk to complete that section. Meeting was held with the owner explaining the consequences of not meeting that deadline
- DC water/ Pepco Conflict still hindering progress at the block of T and U street.

ACTION ITEMS.-

Action	Description	Action By	Original Date	Expected Date	Status
001	Address the MOT, safety issues within the corridor.	FMCC/Kevin Felix	June 5, 2019	September 10, 2019	Ongoing
002	Submit bus shelters Clear Channel full acceptance documentation.	FMCC/John Constantino	June 14, 2019	September 10, 2019	Ongoing
003	Address the issues with cracked/missing sidewalk sections	FMCC	July 2, 2019	September 10, 2019	Ongoing
004	Address DC Water's issue that DEN is covering their curb stops, between R and T Streets.	FMCC/DEN	July 2, 2019	September 10, 2019	Ongoing
005	Insert the missing valve cover at 1724 14 th Street NW	FMCC	July 5, 2019	September 10, 2019	Ongoing
006	FMCC to provide some type of handle for the grate placed IFO Cleaners at 1329 14 th Street	FMCC/John Constantino	July 30, 2019	September 10, 2019	Ongoing
007	FMCC to resolve the cracked granite, contact insurance, and follow up with the businesses.	FMCC/Abdalla Elsheikh	July 30, 2019	September 10, 2019	Ongoing
008	Mr. Said Chestnut to contact Mr. Jermaine Quattlebaum and start punch list for DC Water work.	ATCS/Said Chestnut and DC Water/ Jermaine Quattlebaum	August 06, 2019	September 10, 2019	Ongoing
009	Address the comments regarding the pricing for the 4 extra poles used for temporary lighting	FMCC/Shaddy Abdelaal	August 13, 2019	September 10, 2019	Ongoing

010	RFI-16, CB-25 conflict on T Street. Provide a sketch with the proposed solution	FMCC/John Constantino	August 13, 2019	September 10, 2019	Ongoing
011	RFI-16, CB-25 conflict on T Street. Provide a write-up on the proposed solution	DC Water/ Jermaine Quattlebaum	August 13, 2019	September 10, 2019	Ongoing
012	Provide PEPCO a price proposal for the vertical adjustments within the corridor.	FMCC/John Constantino	August 27, 2019	August 28, 2019	New
013	RFI for the fire hydrant conflict at the Zipcar parking sign at northeast side of Q Street	FMCC/Abdalla Elsheikh	August 27, 2019	August 30, 2019	New
014	FMCC to sign CO#2 and CO#3 for DDOT approval.	FMCC/Cesar Casanova	August 27, 2019	August 30, 2019	New
015	Site visit with Mr. Cesar Barreto, ADA Specialist for the vault slope	CM/Kendry Contreras	August 27, 2019	August 30, 2019	New

4. MEETINGS/ PROJECTCOORDINATION

- New Progress Meeting are schedule at the Field Office every other Tuesday at 10:30am
- Meeting with DCWater/ Pepco at DDOT headquarters. Main topics:
 - 1) Mike Walsh MW (PEPCO) acknowledged the ownership of the duct bank in conflict with the 12” waterline. He mentioned that in his permit drawings the 12” was not shown and they were permitted to install it closer to the 6”.
 - 2) PEPCO still investigating why the duct bank was not accurately shown in their as-builts
 - 3) PEPCO inquired DCwater if it will be possible to pay them for relocating the 12” waterline. Moving the ductbank will be time consuming and expensive.
 - 4) Dexter H. (DC water) said) in principle is possible but there is currently no mechanism for reimbursement between DC Water and PEPCO.
 - 5) PEPCO will need to get an agreement with DC water for funding. DC water then will request a change order to DDOT for the additional work (offsetting the line)
 - 6) DC Water will abandon the existing 12 “.
 - 7) DC water is willing to accept in good faith an official letter from PEPCO committing to fund the change order. Mr. Walsh to research within PEPCO what can be done (ACTION ITEM)
 - 8) DC water expects this work to take 6-8 weeks, it is paramount that all party are ready to begin construction by the end of September to avoid a schedule slippage.
 - 9) DDOT and DC water gave a low and high estimate to PEPCO (361K – 585K) of the work.
 - 10) DCwater explained PEPCO that once they get the document from them, Negotiation will begin with the contractor for a firm price.
 - 11) The total length of work is about 430-440 LF between T street and U street it impact paving operations and the construction of the bus island near T Street.
 - 12) By next week PEPCO will have a official answer on how they will like to proceed.

5. DAILY WORK PERFORMED

Monday 9/2/2019

NO WORK LABOR DAY

Tuesday 9/3/2019

FMCC worked from 14th & N St to 14th & Rhode Island Avenue installing and removing traffic signs. Quantities will be posted once full block has been completed.

FMCC electrical crew was on site installing galvanized transformer bases, signal poles, pendant poles and ground rods at Swann St (L81, L80) U St. (TS39,TS40) and W St (TS51)

Omni Excavators was not onsite today.

DEN construction. - was not onsite today

Wednesday 9/04/2019

FMCC

Set up MOT at 14th & Thomas Cir, 14th & R St. and 14th & Wallach and 14th & U St. in NB and SB directions. FMCC crew also Set up MOT at 14th & W St. NW for FMCC Pepco Crew Work Zone; FMCC work on Common Excavation for Bus Island at 14th & R at the Curb-Parking Lane plus the Sidewalk as well for Bus Island Common excavation, see Said's IDR for details and additional information on MOT. FMCC set up MOT at R St. & 14th St. NW, at P St. and 14th St. NW; also at Q St. and 14th both at North-Bound and South-Bound. In addition, Washington Gas set up their own MOT Signs; and Verizon Crew set up their own MOT as well at R & 14th at NEC.

FMCC electrical crew was on site installing galvanized transformer bases, pendant poles and ground rods at T St (L87, L88 & U St (L95) U St.

Notes utilities:

1. FMCC PEPCO Crew worked on manholes and conduits between Swann St. and R St. on the West-Side (South-Bound) Directions. They worked on Pepco Manholes installation including sheeting & shoring of proposed PEPCO Manhole Structure.
2. Washington Gas Crew worked on two Manhole structures at East-Bound on P St. and 14th St. Intersection; One of the Steel Plates (10 Ft. X 8Ft) covering the Wash. Gas Manhole embeds into the Milling Zone on P by 10Ft which will likely impact the Surface Asphalt Milling Area until it fixed and Steel Plate removed;
3. Verizon Crew at Intersection of R St. and 14th St. saw cut and excavated for a new communication conduits and duck-bank in curved fashion from R St. toward 14th St. North-Bound; still work-in-progress.

D.E.N. crew did not work on 14th St. project at Intersection of 14th St. and W St. because they worked on another DC-DoT project with FMCC at different location.

FMCC Signal Crew installed 19 new Sign Poles; please see attached Sheet No. SN14, and SN15 (14th St. Project Street Scape-Proposed Signing & Pavement Marking), covering the area of 14th St. from P St & 14th St. Intersection both in North-Bound & South-Bound Directions. NO signs were taken down yet since the new Signs have not arrived to be installed by FMCC Sign Installation crew except two new NO TURN ON RED signs installed at Intersection of P & 14th St. at East and West Ends of Intersection.

Omni Excavators was onsite today hand digging at westbound R St near 1357 14th St trench for tie-in to existing 8" water valve.

Thursday, 9/05/2019

FMCC Set up MOT at 14th & Thomas Cir, 14th & R St. and 14th & Wallach and 14th & U St. in NB and SB directions. FMCC crew also Set up MOT at 14th & W St. NW for FMCC Pepco Crew Work Zone; FMCC work on Common Excavation for Bus Island at 14th & R at the Curb-Parking Lane plus the Sidewalk. FMCC set arrow board near intersection of Florida Ave. and 14th St. Intersection approx.. 75 Ft. North of Construction work zone at 14th St. NW and W St. NW Intersection.

PEPCO:

PEPCO Contractor Stealth Const. worked on proposed abandoned PePCO Manhole at 2220 Block of 14th St.; the PEPCO MH will be connected via new conduct-Duct Bank with the EX-PEPCO MH approx.. 25 Ft. North of to abandoned MH Near Intersection of Florida Ave. and 14th St. Stealth Const. Crew opened and removed the Steel places and began saw cut of PCC Base for Power Conduits to be connected with adjacent MH on Friday.

D.E.N. Construction activities included placement of 9 Cubic Yards of PCC Sidewalk, DC-DoT Class F, Ticket No 192752; 3500PSI; placement of Straight Stone Granite plus 6 Cubic.Yards of Class F (Dry Mix) , DC-DoT Class F. DEN crew also placed Borrow Embankment in the Excavated area and Bumped out areas, plus 4" GAB (Aggregate Base) which was compacted by Jumping Jack and Smooth tamper prior to the placement of Plastic Vapor Barrier and Class F, PCC Sidewalk concrete. Also placed and measured Brick Gutter and Straight Granite Stones near Intersection of W St. and 14th St. NW.

FMCC continued removing existing ground mounted signs and installing new signs as well from S St to T St:

Omni Excavators was onsite working at westbound R St between 13th & 14th St working on 8" water main
Excavation of this trench will continue toward 8" water valve for tie-in.

Friday, 9/06/2019

FMCC & DEN:

Set up MOT at 14th & Thomas Cir, 14th & R St. and 14th & Wallach and 14th & U St. in NB and SB directions. FMCC crew also Set up MOT at 14th & W St. NW for FMCC Pepco Crew Work Zone; FMCC work on Common Excavation for Bus Island at 14th & R at the Curb-Parking Lane plus the Sidewalk. FMCC set arrow board near intersection of Florida Ave. and 14th St. Intersection approx.. 75 Ft. North of Construction Zone on NWC of Florida Ave & 14th St. FMCC and DEN closed off the Sidewalk at 1405 as well as Alley Driveway for Peds and Vehicle Traffic since the PCC Sidewalk requires, (3500 psi-Class F w/HRWR min..

FMCC continued removing existing ground mounted signs and installing new signs. 56 LF of Pipe handrail was installed at southbound 14th & N St by subcontractor Long Fence

PEPCO:

PEPCO Contractor Stealth Const. worked on proposed abandoned PePCO Manhole at 2220 Block of 14th St.; the PEPCO MH will be connected via new conduct-Duct Bank with the EX-PEPCO MH approx.. 25 Ft. North of to abandoned MH Near Intersection of Florida Ave. and 14th St. Stealth Const. Crew opened and removed the Steel places and began saw cut of PCC Base for Power Conduits were connected with adjacent MH near FL Ave & 14th St. Intersection. On Friday, Stealth Crew placed 3 PVC Sch 40 (4") Conduits and excavated approx..4' Deep trench for Pepco conduit-Duct Bank from Abandoned MH to next MH at 25'North near Florida Ave. & 14th St. Intersection.

D.E.N. Construction activities included placement of 7 Cubic Yards of PCC Sidewalk, DC-DoT Class F, Ticket No 192808; 3500PSI; w./HRWR (Summer Mix Concrete). DEN delivered and placed for Straight Stone Granite; total of 6 Cubic Yards of Class F (Dry Mix), DC-DoT Class F. DEN placed GAB and Borrow Embankment (10" Depth) in the Excavated area and Bumped out areas, plus 4" GAB (Aggregate Base) which was compacted by Jumping Jack and Smooth tamper prior to the placement of Plastic Vapor Barrier and Class F, PCC Sidewalk concrete. Also placed and measured Brick Gutter and Straight Granite Stones near Intersection of W St. and 14th St. NW.

Omni Excavators was onsite working at westbound R St between 13th & 14th St working on 8" water main installing plug at terminal end of trench.

Saturday, 9/07/2019

FMCC:

FMCC crew set up the MOT at 14th & W St. Intersection; 14th and R St. NW Intersection for OMNI Excavators Inc. working on Backfill for 8" Water-Main; The FMCC crew also opened the sidewalk for PEDS and Wheel Chair traffic at 14th St. & W St. NW next to Lumen Condo Bldg. FMCC also set up MOT for Bike, Peds and Vehicle Traffic at 1722 14th St. NW for FMCC PEPCO crew working on Pepco vaults and Manholes.

PEPCO:

PEPCO Contractor (FMCC) worked on Sheeting & Shoring and Forming a PEPCO Vault size: 5 Ft. X 6 Ft. X 5Ft) cast in Place; this vault will feed the adjacent bldg. at 1722-14th St. NW; there is also a 2nd proposed (4' x4'X4') pre-Cast PEPCO MH that is located approx.. 25 Ft. S.West at 1722 Block; Near the Main Vault which will be connected by conduits to adjacent bldgs..

OMNI Excavators Inc. :

Omni Inc. crew performed the following construction and DC Water related activities:

1. Moved the Steel Plates; placed 57 Stone (approx.. 15" to 18" to embed the newly connect 45 Degree with 8"-Wide Water Main that runs under PePCO and Verizon Duct Banks across R St. at 14th St.NW-East Bound.
2. Omni crew then placed Crushed Rock (CR-6, 1-1/2" Crushed Rock #200 & Then compacted lift by lift with Jumping Jack up to 3" from the Surface of Grade on R St.
3. OMNI Crew did not place any new 8" Pipe or 45 Degree Connections since DC Water Inspector was not onsite to inspect & observe placement of new water-main pipe connection; please see Sr. Inspector Said Chesnutt IDR Report for any Water-Main Pipe two 45 Degree connection placed on Friday, 9/6/2019.
4. The crew then delivered 17.86 Ton of Crushed Rock-CS-CR-6, 1.1/2"-#200 to the jobsite for Backfill;
5. OMNI delivered 3.27 Ton Surface Asphalt (DC.12.5mm-Warm—WM-70) for backfill in-lieu of Steel Plates for surface placement & Compacted with Smooth Tamper.
6. OMNI, Inc crew with FMCC MOT crew cleaned up the jobsite and set up MOT Barriers, Orange Barrel and Cones for PEDS, Bike and Vehicle Traffic.

6. INSPECTION&MATERIAL TESTS PERFORMED

7. RFI's/SUBMITTALS

1. Requests for Information:

- To date, we have received **37** RFIs; **35** RFIs have been answered.

2. Submittals:

- We have received **82** Submittals; **82** Submittals have been Approved.

8. CHANGE ORDERS/TASK ORDERS

- CO submitted to FMCC for missing ITS fiber items. Waiting for their signature
- CO submitted to FMCC for extra fittings for water main work. Waiting for their signature
- FMCC to revise overhead cost (field office, MOT...) change order for 6month contract extension.
- FMCC to revise their request for material adjustment 4 light poles
- Pending proposal FMCC for PEPCO manhole vertical adjustments

9. DBE or CBE PARTICIPATION SUMMARIES

3. ATCS CBE / DBE Activity:

- Hayat Brown LLC.: Provided Office Engineering and Inspection support for this project.
- Cube root: Provided Inspection support

4. Fort Myer Construction Corp. DBE Activity:

- Omni Excavators Inc.
- Den United LLC.
- Long Fence

ACCIDENTS/INCIDENT

- Complain by Wheelchair rider that she fell from the bus island at N street because the handrail was missing. FMCC notified immediately and Long Fence mobilize to install the missing handrail

11. PHOTOS OF WORK PERFORMED THIS PERIOD



28' Pole L80/PP installed by FMCC Electric crew



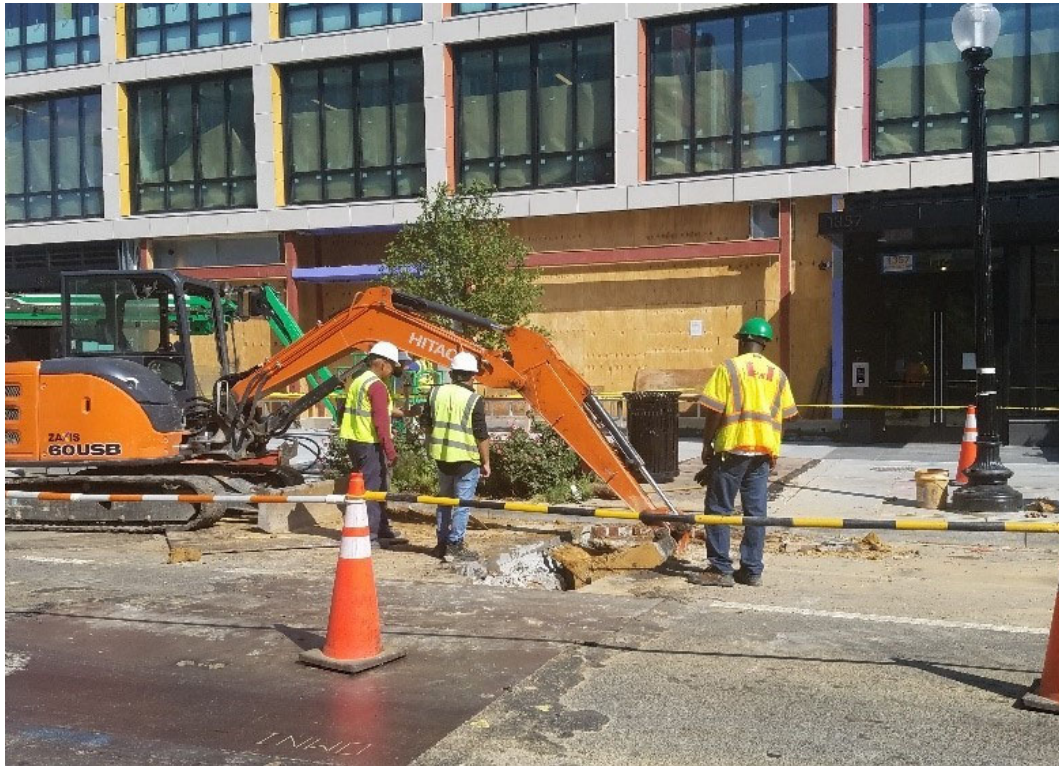
DEN crew placed Burrow Embankment, topped with GAB 4" & compacted prior to placement PCC Sidewalk.



D.E.N placed 9 CY Class F, DC-DOT 3500 PSI Concrete for PCC Sidewalk.



New traffic signs installed by FMCC at NWC of 14th & RIA



Wide view of excavation by Omni at 1357 R St.



28' Pole L88/PP installed by FMCC Electric crew



Hand excavation near existing utility duct bank.



Installation of signs at SEC of 14th & S St



45° 8" DIP fitting at trench crossing R St



PEPCO Contractor Stealth Const. run a new wires, conduits 4" PVC Sch. 40 from abandoned MH.on 14th St.



FMCC crew Core Drilled and Installed a total of 19 Signs Poles from P to Q St. in NB & SB Directions.



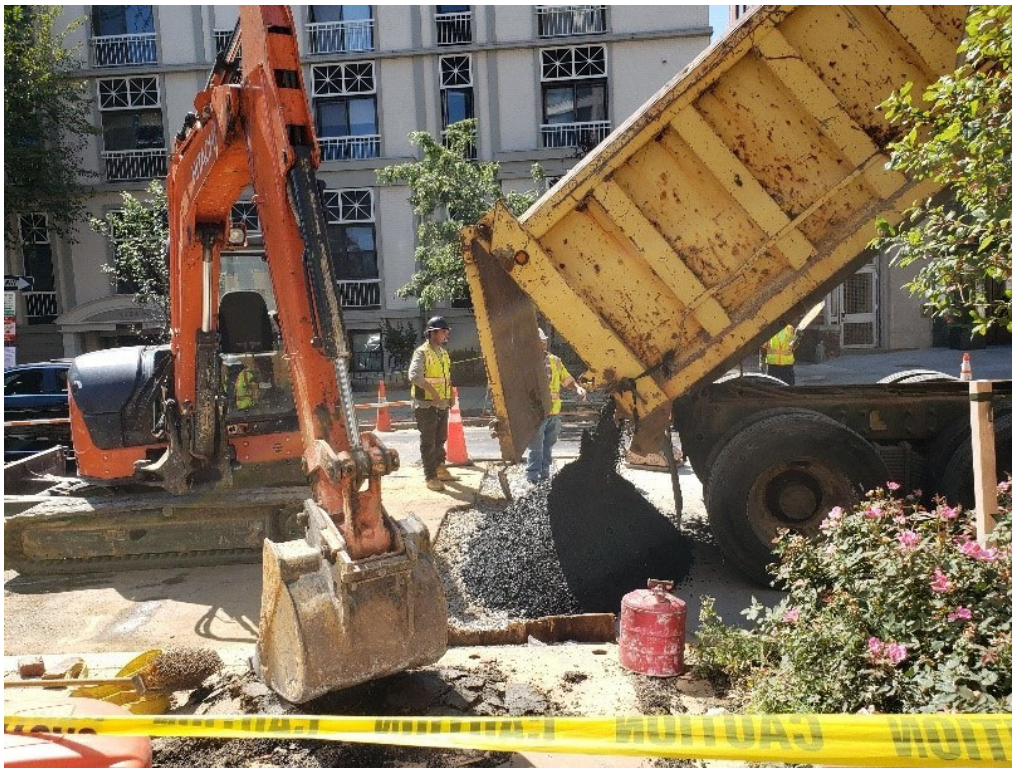
Pepco Crew worked at 2 various locations on 14th St. NB between W St. and Florida Ave. and SB between Swann St. and R St. on 14th .



DEN Placed PCC Sidewalk in fronty of 1405 Condo Bldg, a total of 7 C.Yds, Class F Concteter placed.



D.E.N crew excavated; then placed Borrow Embankment & GAB at 1405 for PCC-Sidewalk.



OMNI, Inc. delivered and placed 3.27 Ton of WM-12.5MM Asphalt on Top of CR-6 compacted material at R St. NW.



OMNI, Inc. Crew Back-filled & Compacted the Water-Main Trench with CR-6 #200 Stone; at 14th & R St.NW.



Plug installed at 8" main at close of work day by Omni.



Pipe Handrail installed at bus island at SWC of 14th & N St